

Model RPM-1000 is a fully-automated palletizing system that is versatile and cost effective that can build an accurate pallet at an average rate of *30 containers/min.* Robot Packaging has pre-engineered our systems to provide compact modules that are easy to setup and operate using EasyPallet Software. We offer entry-level palletizers that can be expanded and configured to handle an increase or change in production needs. RPM-1000 can simultaneously palletize up to four production lines, and is designed to handle a broad range of products, pallets and slip/tie sheets without tool changes.

RPM-1000



FEATURES:

- Motoman MPL-100 Robot
- DX-100 Robot Control Panel
- Easy Pallet Software
- Vacuum & Mechanical Gripper
- Can handle up to 160 lbs
- Handles Cases and Pallets
- Product Infeed Conveyor
- Product Discharge Conveyor
- Empty Pallet Rack
- Safety Fencing w/Interlocks
- Safety Light Curtain
- **Delivery in 4 to 6 weeks**

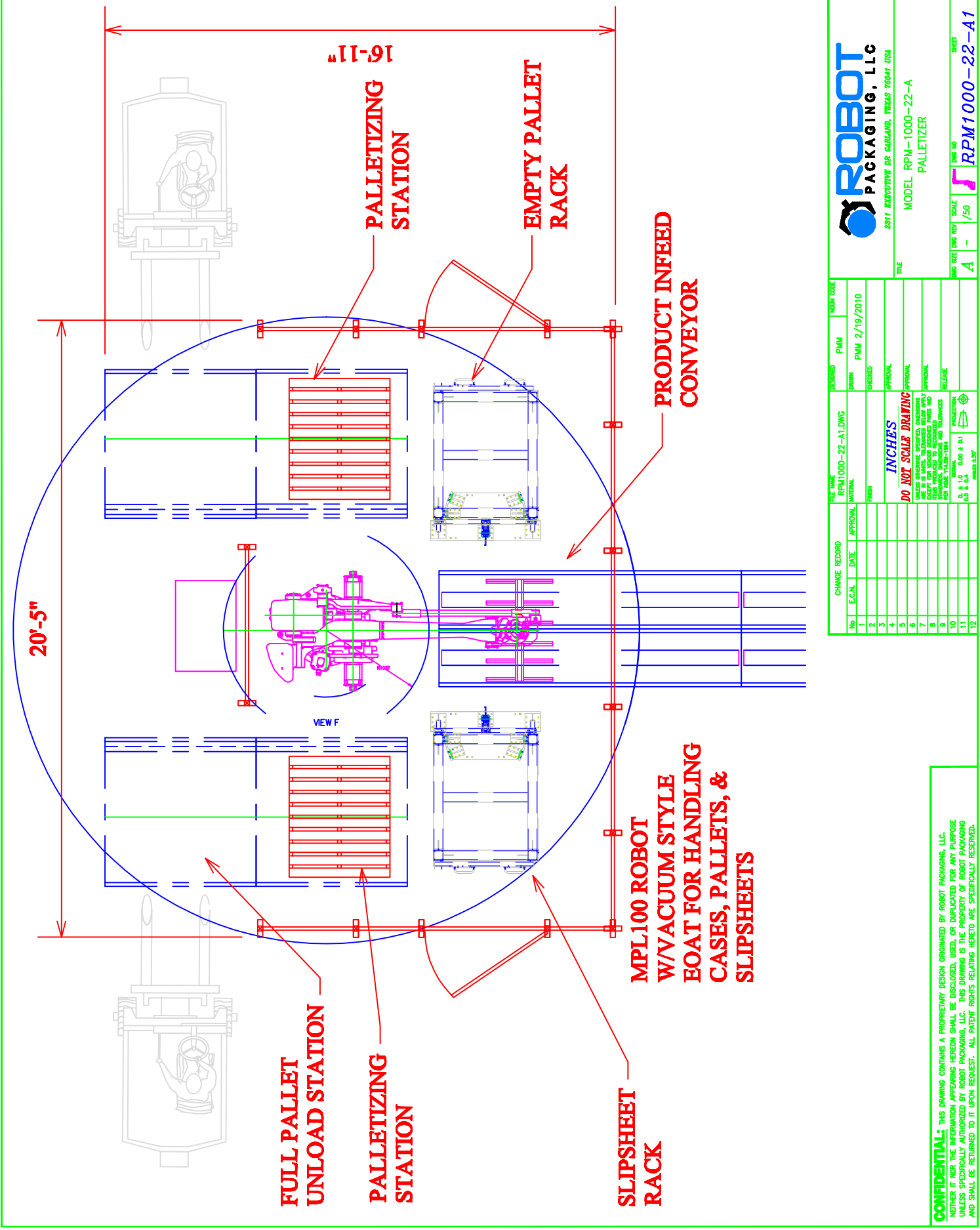
OPTIONS:

- Slip/Tiersheet Rack
- Up to 4 infeed & Outfeed Lines
- Automatic Pallet Dispenser
- Custom EOAT for handling Bags
- Transfer Car Pallet Conveying
- Automatic Stretch Wrappers
- Mechanical & Electrical Installation

WWW.ROBOTPACKAGING.COM

ROBOT PACKAGING, LLC, PLANO, TX 75023

1-877-870-7191



20'-5"

16'-11"

**FULL PALLET
UNLOAD STATION**

**PALLETIZING
STATION**

**PALLETIZING
STATION**

**EMPTY PALLET
RACK**

**PRODUCT INFED
CONVEYOR**

**MPL100 ROBOT
W/VACUUM STYLE
EOAT FOR HANDLING
CASES, PALLETS, &
SLIPSHEETS**

**SLIPSHEET
RACK**

VIEW F

		MODEL RPM-1000-22-A PALLETIZER	
2811 EXECUTIVE DR GARLAND, TEXAS 76641 USA		TITLE	
DWG NO A	SCALE 1/50	SHEET NO 1	SHEET TOTAL 1
FILE NAME RPM1000-22-A1.DWG	DESIGNED PAMI	MODEL CODE RPM1000-22-A1	DATE 2/19/2010
CHANGE RECORD	APPROVAL	CHECKED	APPROVAL
No. E.C.N. DATE	APPROVAL	CHECKED	APPROVAL
1			
2			
3			
4			
5			
6			
7			
8			
9			
10			
11			
12			

INCHES
 DO NOT SCALE DRAWING
 UNLESS OTHERWISE SPECIFIED, DIMENSIONS ARE TO FACE UNLESS INDICATED OTHERWISE. DIMENSIONS ARE TO CENTER UNLESS OTHERWISE SPECIFIED.

CONFIDENTIAL: THIS DRAWING CONTAINS A PROPRIETARY DESIGN ORIGINATED BY ROBOT PACKAGING, LLC. NEITHER IT NOR THE INFORMATION APPEARING HEREON SHALL BE DISCLOSED, USED, OR DUPLICATED FOR ANY PURPOSE UNLESS SPECIFICALLY AUTHORIZED BY ROBOT PACKAGING, LLC. THIS DRAWING IS THE PROPERTY OF ROBOT PACKAGING AND SHALL BE RETURNED TO IT UPON REQUEST. ALL PATENT RIGHTS RELATING HERETO ARE SPECIFICALLY RESERVED.